



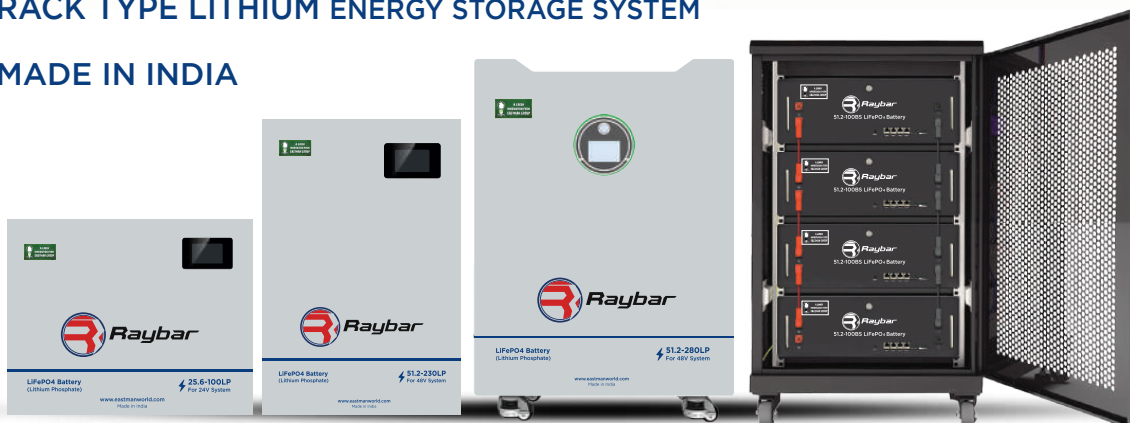
**Energy expertise**  
one solution at a time.



## LITHIUM BATTERIES

WALL MOUNTED | FLOOR MOUNT  
RACK TYPE LITHIUM ENERGY STORAGE SYSTEM

MADE IN INDIA

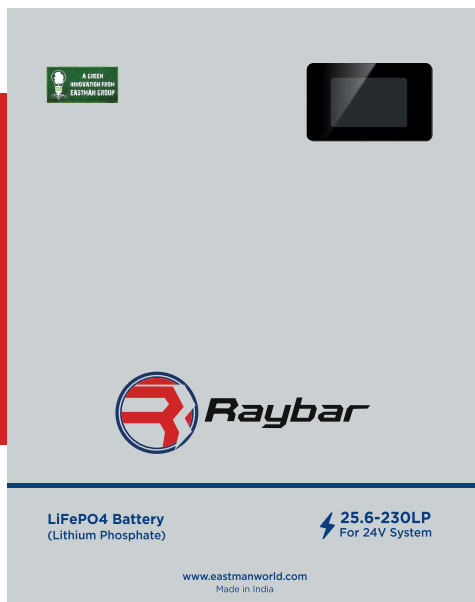


# Eastman Introduction

Eastman Auto & Power Limited is an Indian manufacturer of solar energy solutions, energy storage systems, and power electronics. Backed by a legacy of innovation and trust built over decades, the company was founded under the visionary leadership of Mr. Jagdish Rai Singal to shape the future of sustainable energy. With a strong global presence, Eastman products are distributed across more than 50 countries spanning Asia, the Middle East, Europe, Africa, the Caribbean, and the Americas.

The company offers a comprehensive portfolio including Lithium Batteries, Inverters, Lead Acid Batteries, and a range of advanced power electronics. Eastman serves diverse energy needs across residential, commercial, and industrial sectors-delivering reliable, efficient, and smart power solutions for a rapidly evolving world.





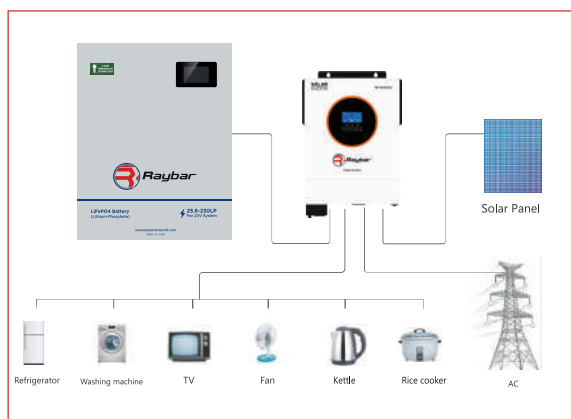
## RESIDENTIAL RB25.6V LiFePO4 (Lithium Phosphate) ENERGY STORAGE BATTERY

**MADE IN INDIA**

### Introduction

Upgrade your Energy Storage with our Lithium Phosphate Battery. Stay informed with real-time operation status via the LCD Screen, ensuring total control and efficiency for your power requirements.

### Connection Diagram



### Product Features

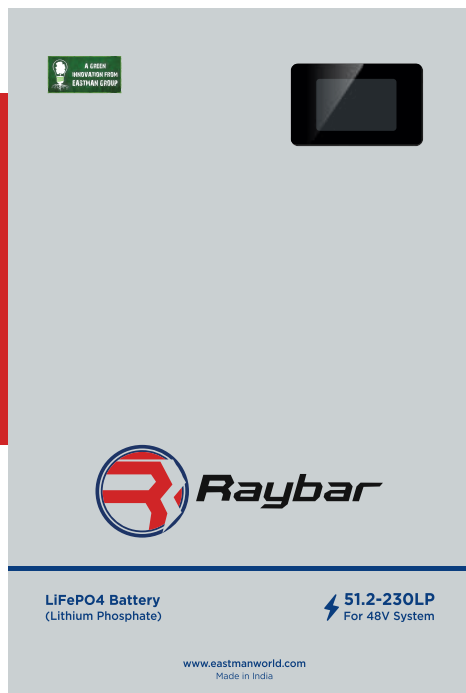
- Real-time monitoring of operation status by LCD Screen.
- Intelligent Air Cooling & Heat dissipation.
- RS485/CAN Communication for connecting more batteries in parallel.
- Installation option: Wall mount.

### Certifications



### Product Specifications

| Model                                   | RB25.6-100LP                              | RB25.6-230LP |
|---|---|--------------|
| Array Mode                              |   | 8S           |
| Nominal Energy (kWh)                    | 2.5                                       | 5.8          |
| Nominal Voltage (V)                     |   | 25.6         |
| Charge Voltage (V)                      |   | 29.2         |
| Discharge Cut-off Voltage (V)           |   | 21           |
| Standard Charging Current(A)            | 20  | 46           |
| Max. Continuous Charging Current (A)    |   | 100          |
| Max. Continuous Discharging Current (A) |   | 100          |
| Cycle Life                              | 6000 Cycles @80% DOD @25°C @0.2C/0.2C     |              |
| Communication Mode                      | RS485/CAN, RS232, RS485/RS485             |              |
| Parallel Connection                     | Yes, upto 15 units                        |              |
| Operating Temp                          | Charging: 0~60°C; Discharging: -10°C~65°C |              |
| Size(LxWxH) mm                          | 440x170x350                               | 560x470x170  |
| Net Weight (kg)                         | ~23                                       | ~45          |
| Gross Weight (kg)                       | ~25                                       | ~47          |
| Warranty                                | 5 Years                                   |              |
| Altitude                                | ≤4000m                                    |              |
| Humidity                                | <90%RH                                    |              |
| Shelf Temperature                       | 10°C~60°C                                 |              |
| Design Life                             | 10+ Years at 25°C/77°F                    |              |



**MADE IN INDIA**

## RESIDENTIAL RB51.2V LiFePO4 (Lithium Phosphate) ENERGY STORAGE BATTERY

### Introduction

Upgrade your Energy Storage with our Lithium Phosphate Battery. Stay informed with real-time operation status via the LCD Screen, ensuring total control and efficiency for your power requirements.

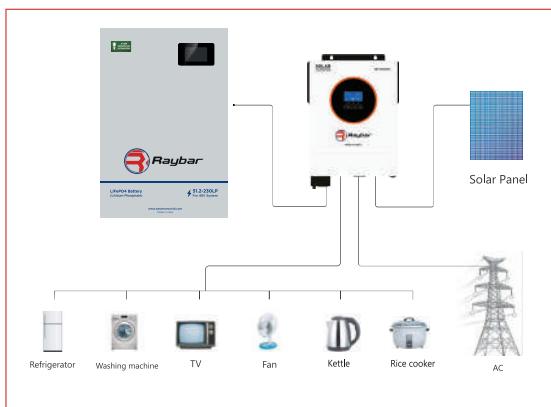
### Product Features

- Real-time monitoring of operation status by LCD Screen.
- Intelligent Air Cooling & Heat dissipation.
- RS485/CAN Communication for connecting more batteries in parallel.
- Installation option: Wall mount.

### Certifications

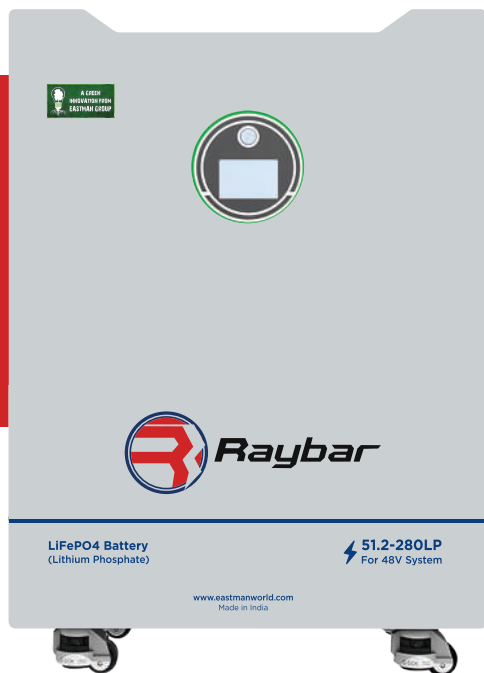


### Connection Diagram



### Product Specifications

| Model                                   | RB51.2-100LP                              | RB51.2-230LP |
|---|---|--------------|
| Array Mode                              |   | 16S          |
| Nominal Energy (kWh)                    | 5.1                                       | 11.7         |
| Nominal Voltage (V)                     |   | 51.2         |
| Charge Voltage (V)                      |   | 58.4         |
| Discharge Cut-off Voltage (V)           |   | 42           |
| Standard Charging Current(A)            | 20  | 46           |
| Max. Continuous Charging Current (A)    | 100                                       | 200          |
| Max. Continuous Discharging Current (A) | 100                                       | 200          |
| Cycle Life                              | 6000 Cycles @80% DOD @25°C @0.2C/0.2C     |              |
| Communication Mode                      | RS485/CAN, RS232, RS485/RS485             |              |
| Parallel Connection                     | Yes, upto 15 units                        |              |
| Operating Temp                          | Charging: 0~60°C; Discharging: -10°C~65°C |              |
| Size(LxWxH) mm                          | 560x470x170                               | 670x485x244  |
| Net Weight (kg)                         | ~41                                       | ~93          |
| Gross Weight (kg)                       | ~43                                       | ~106         |
| Warranty                                | 5 Years                                   |              |
| Altitude                                | ≤4000m                                    |              |
| Humidity                                | <90%RH                                    |              |
| Shelf Temperature                       | 10°C~60°C                                 |              |
| Design Life                             | 10+ Years at 25°C/77°F                    |              |

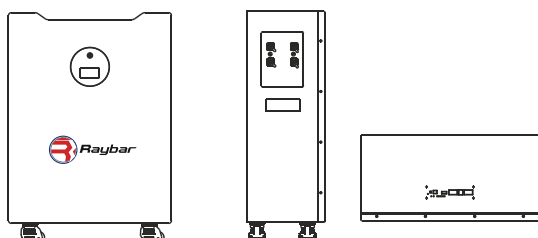


**MADE IN INDIA**

### Certifications



### Structural Part Description



### Product Specifications

| Model                                   | RB51.2-280LP                              |
|---|---|
| Array Mode                              | 16S                                       |
| Nominal Energy (kWh)                    | 14.3                                      |
| Nominal Voltage (V)                     | 51.2                                      |
| Charge Voltage (V)                      | 58.4                                      |
| Discharge Cut-off Voltage (V)           | 42  |
| Standard Charging Current(A)            | 56  |
| Max. Continuous Charging Current (A)    | 200                                       |
| Max. Continuous Discharging Current (A) | 200                                       |
| Cycle Life                              | 6000 Cycles @80% DOD @25°C @0.5C/0.5C     |
| Communication Mode                      | RS485/CAN, RS232, RS485/RS485             |
| Parallel Connection                     | Yes, upto 15 units                        |
| Operating Temp                          | Charging: 0~60°C; Discharging: -10°C~65°C |
| Size(LxWxH) mm                          | 750x580x279                               |
| Net Weight (kg)                         | ~113                                      |
| Gross Weight (kg)                       | ~128                                      |
| Warranty                                | 5 Years                                   |
| Altitude                                | ≤4000m                                    |
| Humidity                                | <90%RH                                    |
| Shelf Temperature                       | 10°C~60°C                                 |
| Design Life                             | 10+ Years at 25°C/77°F                    |

## RESIDENTIAL RB51.2V LiFePO4 (Lithium Phosphate) ENERGY STORAGE BATTERY

### Introduction

Upgrade your Energy Storage with our Lithium Phosphate Battery. Stay informed with real-time operation status via the LCD Screen, ensuring total control and efficiency for your power requirements.

### Product Features

- LCD Display for monitoring energy storage, power data and operating status.
- High-Quality LiFePo4 Battery for Deep Cycle and Long Lifespan.
- Metal Casing that ensures waterproof and explosion-proof safety.
- External Main Switch to reduce product power consumption and improve safety.
- Mobile bottom wheels designed for easy installation across various locations with ease.
- In-built BMS for Over-Voltage, Over-Load and Over-Temperature protection.
- Compatible -It can be connected to different types of loads within the voltage range.
- Installation option: Floor mount.



# RACK TYPE LITHIUM ENERGY STORAGE BATTERY

**MADE IN INDIA**

## Connection Diagram



## Certifications



## Applications

- Telecom
- UPS
- Emergency Light
- Solar System
- Wind Power

## Introduction

Optimize your Energy Solution with our Rack-Type Energy Storage. Featuring advanced warning functions for secure and dependable operation in all conditions.

## Product Features


- Standardized Design: Our 3U and 4U Standardized case ensures broad applicability.
- Enhanced Energy Capacity: Support multiple parallel battery usage to meet high energy demands.
- Intelligent Lithium Battery Management System: Equipped with RS485 communication, offers real-time battery monitoring and customizable protection parameters such as charge & discharge.
- Balancing: Automatic collection of battery single series voltage, pressure difference up to 30 Mega Volt (can be set) with an automatic start equalization function.
- Warning Function: Advanced warning functions, including Overcharge, Over-Discharge, Over-Current, High-Temperature and Low-Temperature alerts reducing potential safety risks.

## Product Specifications

| Model                                   | RB51.2-100BS                              | RB51.2-400BS                |
|---|---|-----------------------------|
| Array Mode                              | 16S                                       | 16S x4 (Module)             |
| Nominal Energy (kWh)                    | 5.1                                       | 20.0                        |
| Nominal Voltage (V)                     |   | 51.2                        |
| Charge Voltage (V)                      |   | 58.4                        |
| Discharge Cut-off Voltage (V)           |   | 42                          |
| Standard Charging Current(A)            | 20  | 20x4                        |
| Max. Continuous Charging Current (A)    | 100                                       | 100x4                       |
| Max. Continuous Discharging Current (A) | 100                                       | 100x4                       |
| Cycle Life                              | 6000 Cycle @80% DOD @25°C @0.2C/0.2C      |                             |
| Communication Mode                      | RS485/CAN                                 |                             |
| Operating Temp                          | Charging: 0~60°C; Discharging: -10°C~65°C |                             |
| Size(LxWxH) mm                          | 520x495x175                               | 600x600x1000 (with cabinet) |
| Net Weight (kg)                         | ~44                                       | ~200                        |
| Gross Weight (kg)                       | ~46                                       | ~210                        |
| Warranty                                | 5 Years                                   |                             |
| Altitude                                | ≤4000m                                    |                             |
| Humidity                                | <90%RH                                    |                             |
| Shelf Temperature                       | 10°C~60°C                                 |                             |
| Design Life                             | 10+ Years at 25°C/77°F                    |                             |



# RACK TYPE LITHIUM ENERGY STORAGE SYSTEM

| Sr. No. | Item Description                                    | Reference Image   | QTY. | UOM  |
|---------|---|---|------|------|
| 1       | Rack 4P with Four Wheels and one AC Extension Board |    | 1    | Nos. |
| 2       | Battery Pack  |   | 4    | Nos. |
| 3       | Connection Cable Negative Terminal                  |  | 3    | Nos. |
| 4       | Connection Cable Positive Terminal                  |  | 3    | Nos. |
| 5       | Rack To Inverter Connection Cable Negative Terminal |  | 1    | Nos. |
| 6       | Rack To Inverter Connection Cable Positive Terminal |  | 1    | Nos. |
| 7       | Ph Head M6*12                                       |  | 16   | Nos. |



[www.eastmanworld.com](http://www.eastmanworld.com)  
[marketing@eastmanworld.com](mailto:marketing@eastmanworld.com)

**AMPS MIDDLE EAST FZ LLC**

#703, 7<sup>th</sup> Floor, Deira Twin Tower,  
Baniyas Square, Deira, Dubai (UAE)

**EASTMAN AUTO & POWER LTD.**

Quattro Towers, 249, Udyog Vihar Phase-4, Gurugram,  
Haryana 122016, India

**EASTMAN NEW ENERGY PRIVATE LIMITED**

Plot No 264, Sector-7, IMT Manesar, District - Gurugram  
Haryana-122050, India

Follow us on »  @eastman\_world  @EastmanWorld  @EastmanWorld